

01



Döner Tablalı

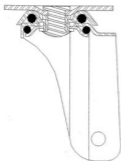
Servis ekipmanları için döner tablalı, polipropilen kasnaklı ve termoplastik kauçuk kaplamalı ürünler

Plate Fitting

Services equipment castors with top plates, polypropylene core and thermoplastic rubber tyre



EP 01 MKT 100x25	100	25	129	34	65x65	47x47	8,5	2,5	2	K	365	80	-
EP 01 MKT 100x25 F	100	25	129	34	65x65	47x47	8,5	2,5	2	K	450	80	-
EP 01 MKT 100x32	100	32	136	41	78x68	56x46	8,5	3	2,5	K	625	80	+
EP 01 MKT 100x32 F	100	32	136	41	78x68	56x46	8,5	3	2,5	K	720	80	+
EP 01 MBT 100x32	100	32	136	41	78x68	56x46	8,5	3	2,5	B	655	80	S
EP 01 MBT 100x32 F	100	32	136	41	78x68	56x46	8,5	3	2,5	B	750	80	S
EP 01 MKT 125x32	125	32	160	43	78x68	56x46	8,5	3	2,5	K	760	90	+
EP 01 MKT 125x32 F	125	32	160	43	78x68	56x46	8,5	3	2,5	K	850	90	+
EP 01 MBT 125x32	125	32	160	43	78x68	56x46	8,5	3	2,5	B	790	90	S
EP 01 MBT 125x32 F	125	32	160	43	78x68	56x46	8,5	3	2,5	B	880	90	S



Özellikler

- Koyu gri, termoplastik kauçuk kaplama (90 Shore-A)
- Açık gri, polipropilen kasnak
- Kendinden burçlu veya bilya rulmanı tekerlek yatağı
- Crvata ve somunlu tekerlek bağlantısı
- Çift sıra bilyalı maşa yatağı
- Çinko kaplı, tablalı maşa

Specifications

- Dark gray thermoplastic rubber tyre (90 Shore-A)
- Light gray polypropylene wheel center
- Plain bore or ball bearing
- Bolted wheel axle
- Double ball race in swivel head
- Zinc plated fork with top plate

02

Sabit Maşalı

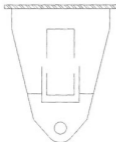
Servis ekipmanları için sabit maşalı, polipropilen kaskaklı ve termoplastik kauçuk kaplamalı ürünler

Fixed Fork

Services equipment castors with top plates, polypropylene core and thermoplastic rubber tyre



EP 02 MKT 100x25	100	25	122	85x37	63	8,5	2	K	256	60	-
EP 02 MKT 100x32	100	32	133	78x68	56x46	8,5	2,5	K	500	80	+
EP 02 MBT 100x32	100	32	133	78x68	56x46	8,5	2,5	B	530	80	S
EP 02 MKT 125x32	125	32	157	78x68	56x46	8,5	2,5	K	580	90	+
EP 02 MBT 125x32	125	32	157	78x68	56x46	8,5	2,5	B	610	90	S



Özellikler

- Koyu gri, termoplastik kauçuk kaplama (90 Shore-A)
- Açık gri, polipropilen kaskak
- Kendinden burçlu veya bilya rulmanlı tekerlek yatağı
- Crvata ve somunlu tekerlek bağlantısı
- Çinko kaplı, sabit maşa

Specifications

- Dark gray thermoplastic rubber tyre (90 Shore-A)
- Light gray polypropylene wheel center
- Plain bore or ball bearing
- Bolted wheel axle
- Zinc plated fixed fork

03













Pim Bağlantılı

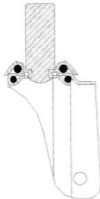
Servis ekipmanları için pim bağlantılı, polipropilen kasnaklı ve termoplastik kauçuk kaplamalı ürünler

Stem Fitting

Services equipment castors with stem fitting, polypropylene core and thermoplastic rubber tyre



												
EP 03 MKT 100x25	100	25	122	34	22	40	2	K	395	60	-	
EP 03 MKT 100x25 F	100	25	122	34	22	40	2	K	455	60	-	
EP 03 MKT 100x32	100	32	133	41	22	50	2,5	K	655	80	+	
EP 03 MKT 100x32 F	100	32	133	41	22	50	2,5	K	750	80	+	
EP 03 MBT 100x32	100	32	133	41	22	50	2,5	B	685	80	S	
EP 03 MBT 100x32 F	100	32	133	41	22	50	2,5	B	780	80	S	
EP 03 MKT 125x32	125	32	157	43	22	50	2,5	K	775	90	+	
EP 03 MKT 125x32 F	125	32	157	43	22	50	2,5	K	870	90	+	
EP 03 MBT 125x32	125	32	157	43	22	50	2,5	B	805	90	S	
EP 03 MBT 125x32 F	125	32	157	43	22	50	2,5	B	900	90	S	



Özellikler

- Koyu gri, termoplastik kauçuk kaplama (90 Shore-A)
- Açık gri, polipropilen kasnak
- Kendinden burçlu veya bilya rulmanlı tekerlek yatağı
- Çrvata ve somunlu tekerlek bağlantısı
- Çift sıra bilyalı maşa yatağı
- Çinko kaplı, pimli maşa

Specifications

- Dark gray thermoplastic rubber tyre (90 Shore-A)
- Light gray polypropylene wheel center
- Plain bore or ball bearing
- Bolted wheel axle
- Double ball race in swivel head
- Zinc plated fork with stem fitting

04

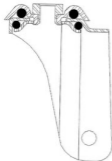
Delik Bağlantılı Hole Fitting

Servis ekipmanları için delik bağlantılı, polipropilen kasnaklı ve termoplastik kauçuk kaplamalı ürünler

Services equipment castors with hole fitting, polypropylene core and thermoplastic rubber tyre



EP 04 MKT 100x25	100	25	122	34	10	2	K	315	60	-
EP 04 MKT 100x25 F	100	25	122	34	10	2	K	375	60	-
EP 04 MKT 100x32	100	32	133	41	10	2.5	K	510	80	+
EP 04 MKT 100x32 F	100	32	133	41	10	2.5	K	600	80	+
EP 04 MBT 100x32	100	32	133	41	10	2.5	B	540	80	S
EP 04 MBT 100x32 F	100	32	133	41	10	2.5	B	630	80	S
EP 04 MKT 125x32	125	32	157	43	10	2.5	K	630	90	+
EP 04 MKT 125x32 F	125	32	157	43	10	2.5	K	725	90	+
EP 04 MBT 125x32	125	32	157	43	10	2.5	B	660	90	S
EP 04 MBT 125x32 F	125	32	157	43	10	2.5	B	755	90	S



Özellikler

- Koyu gri, termoplastik kauçuk kaplama (90 Shore-A)
- Açık gri, polipropilen kasnak
- Kendinden burçlu veya bilya rulmanlı tekerlek yatağı
- Cıvata ve somunlu tekerlek bağlantısı
- Çift sıra bilyalı maşa yatağı
- Çinko kaplı, delikli maşa

Specifications

- Dark gray thermoplastic rubber tyre (90 Shore-A)
- Light gray polypropylene wheel center
- Plain bore or ball bearing
- Bolted wheel axle
- Double ball race in swivel head
- Zinc plated fork with hole fitting

05

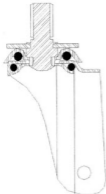
Cıvata Bağlantılı Bolt Fitting

Servis ekipmanları için cıvata bağlantılı, polipropilen kasnaklı ve termoplastik kauçuk kaplamalı ürünler

Services equipment castors with bolt fitting, polypropylene core and thermoplastic rubber tyres



EP 05 MKT 100x25	100	25	129	34	5/8-M16	30	2	K	425	60	-
EP 05 MKT 100x25 F	100	25	129	34	5/8-M16	30	2	K	485	60	-
EP 05 MKT 100x32	100	32	136	41	5/8-M16	30	2,5	K	620	80	+
EP 05 MKT 100x32 F	100	32	136	41	5/8-M16	30	2,5	K	710	80	+
EP 05 MBT 100x32	100	32	136	41	5/8-M16	30	2,5	B	650	80	S
EP 05 MBT 100x32 F	100	32	136	41	5/8-M16	30	2,5	B	740	80	S
EP 05 MKT 125x32	125	32	160	43	5/8-M16	30	2,5	K	740	90	+
EP 05 MKT 125x32 F	125	32	160	43	5/8-M16	30	2,5	K	835	90	+
EP 05 MBT 125x32	125	32	160	43	5/8-M16	30	2,5	B	770	90	S
EP 05 MBT 125x32 F	125	32	160	43	5/8-M16	30	2,5	B	865	90	S



Özellikler

- Koyu gri, termoplastik kauçuk kaplama (90 Shore-A)
- Açık gri, polipropilen kasnak
- Kendinden burçlu veya bilya rulmanlı tekerlek yatağı
- Cıvata ve somunlu tekerlek bağlantısı
- Çift sıra bilyalı maşa yatağı
- Çinko kaplı, cıvatalı maşa

Specifications

- Dark gray thermoplastic rubber tyre (90 Shore-A)
- Light gray polypropylene wheel center
- Plain bore or ball bearing
- Bolted wheel axle
- Double ball race in swivel head
- Zinc plated fork with bolt fitting

07

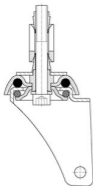
Soket Bağlantılı Expanding Fitting

Servis ekipmanları için soket bağlantılı, polipropilen kasnaklı ve termoplastik kauçuk kaplamalı ürünler

Services equipment castors with expanding fitting polypropylene core and thermoplastic rubber tyres



EP 07 MKT 100x32	100	32	136	41	1-2-3-4	40	2,5	K	670	80	+
EP 07 MBT 100x32 F	100	32	136	41	1-2-3-4	40	2,5	K	760	80	+
EP 07 MBT 100x32	100	32	136	41	1-2-3-4	40	2,5	B	720	80	S
EP 07 MKT 125x32	125	32	160	43	1-2-3-4	40	2,5	K	800	90	+
EP 07 MBT 125x32 F	125	32	160	43	1-2-3-4	40	2,5	K	890	90	+
EP 07 MBT 125x32	125	32	160	43	1-2-3-4	40	2,5	B	850	90	S
EP 07 MKT 125x32 F	125	32	160	43	1-2-3-4	40	2,5	B	940	90	S



Özellikler

- Koyu gri, termoplastik kauçuk kaplama (90 Shore-A)
- Açık gri, polipropilen kasnak
- Kendinden burçlu veya bilya rulmanlı tekerlek yatağı
- Civata ve somunlu tekerlek bağlantısı
- Çift sıra bilyalı maşa yatağı
- Çinko kaplı, soketli maşa

Specifications

- Dark gray thermoplastic rubber tyre (90 Shore-A)
- Light gray polypropylene wheel center
- Plain bore or ball bearing
- Bolted wheel axle
- Double ball race in swivel head
- Zinc plated fork, with expanding fitting

Soket Cinsi ve Aralığı

- 1: Kare (21 - 24)
- 2: Kare (27 - 30)
- 3: Yuvarlak (21 - 24)
- 4: Yuvarlak (27 - 30)

Kind of stem and size

- 1: Square (21 - 24)
- 2: Square (27 - 30)
- 3: Round (21 - 24)
- 4: Round (27 - 30)